



Campaign to Protect
Rural England
HAMPSHIRE

Hampshire Views

Issue 1: Spring / Summer 2009

More Glorious Than Ever CPRE'S Vision For The Countryside In 2026

If you could get hold of a really finely-calibrated time machine and propel yourself forward just a couple of decades or so, how would the Hampshire countryside look, as you stepped out of the machine onto an eminence such as Old Winchester Hill? Would the landscape have been wrecked by urban sprawl, road-building, monoculture farming, with no birds singing and flowers only blooming where they've been told to? Or would it still be as lovely as ever and have more, not less, of the things that we value in it? What is important to us about our countryside and what can we do to protect it? These are the sorts of questions CPRE Hampshire has been asking itself, in common with all the other 42 CPRE Branches. The point of the exercise was to try to distil all of our ambitions for Rural England into a single manifesto: CPRE's '2026 Vision,' which is launched shortly.

We in CPRE are not, on the whole, much given to dreaming; on the contrary, we are a pretty pragmatic lot and if we see something we don't like, we say so and come up with a better plan. Nor are we, and never have been, a backward-looking organisation, seeking to preserve a vanishing rural idyll. That makes this document all the more interesting. For it is, in a considered way, powerfully optimistic. Taking as its starting point today's prevalent view that the combined pressures of built development, changes to farming practices and climate change would be more than the countryside could take, it finds that a combination of the right policy tools and a profound



Shaun Spiers. Guest speaker at our 2009 AGM. The man who had the enviable (?) job of making a coherent document out of the opinions, prejudices, hopes and fears of 43 Branches, 5 Regions and innumerable committees, all of whom claim a complete monopoly of the truth.

change in social attitudes will by 2026 make today's pessimism look strangely misplaced. It identifies the change in people's values away from the single-minded pursuit of economic advantage towards a deeper realisation of what actually makes life better: things like beauty, tranquillity, sense of place and the enjoyment of green open spaces. Policies that play to these very deep-seated desires, some of which are in place and proving their worth today, such as the emphasis on re-use of brownfield land, protection of green belts and the encouragement of local food production and consumption will help, if we make sure they are implemented. The reaction to climate change, leading to more sustainable building and power generation will contribute too.

For a farming county like Hampshire, the emphasis on growing and eating local food will resonate especially. CPRE acknowledges the contribution farmers make to the beauty of the landscape and the importance to the landscape and the people who live in it and around it of eating proper food and living in houses they can afford. To quote the final paragraphs of the vision:

In 2026 a new consensus around the importance of the countryside has enabled the country to move beyond acrimonious battles between 'NIMBYs' and 'philistine developers'. Development does happen in rural areas, but it does so through a democratic planning system that recognises the vital importance of our finite countryside. There is even a new confidence that sensitive, well planned development can even improve and beautify rural areas. As more people come to understand, visit and value the countryside, a virtuous circle has been created: the countryside improves, people care for it more, it is further improved and valued.

The countryside no longer seems permanently under threat, destined to shrink and degrade. Rather, it is valued and enjoyed by all as a huge national asset.

The 2026 Vision will be published in early May. Shaun Spiers, our Chief Executive, has very kindly accepted our invitation to come and talk about it at our AGM on 20 May (details on p 15) Come and hear him and, if you want, ask him what we need to be doing to bring it about.

You can see the text at www.cpre.org.uk

Hampshire Views is the newsletter of the Campaign to Protect Rural England – Hampshire Branch (reg charity no: 245967)

CPRE Hampshire strives to promote the beauty, tranquillity diversity of the countryside by the sustainable use of both land and other natural resources in urban and rural areas and encouraging biodiversity and the well-being of rural communities.

www.cprehampshire.org.uk

Branch Office Details:

CPRE Hampshire
Beaconsfield House
Andover Road
Winchester Hampshire SO22 6AT
Tel: 01962 854655

Pam Mason, Branch Administrator:
admin@cprehampshire.org.uk

Becky French, Branch Media and
Events Coordinator:
info@cprehampshire.org.uk

CPRE Hampshire Contacts:

Branch Groups:

Planning & Rural Group:

Chairman, Christopher Napier:
christopher.napier@cliffordchance.com

Transport Group:

Chairman, Don Stewart:
Don347@btinternet.com

Campaign Management Group:

Group Coordinator, Caroline Ford:
cmg@cprehampshire.org.uk

Social and Fundraising Group:

Group Coordinator, Branch Office
info@cprehampshire.org.uk

Local Contacts:

District Groups:

New Forest: Eve Gillmon:
eve.gillmon@btconnect.com

Test Valley: John Cooper:
johncooper@onetel.net

North Hampshire: Nevil Wilson:
wilsonrn@waitrose.com

North East Hampshire (formally
Hart & Rushmoor): Hugh Sheppard:
hughsheppard@btinternet.com

East Hampshire & Havant:
John Venning: venningsteep@aol.com

For all other Local Authority areas,
please contact Branch Office.

South-East contact:

SE Regional Director: Mr Edward
Dawson, edawson@postmaster.co.uk

A Note From Your Chairman...

People who don't know about CPRE Hampshire sometimes think we are a bunch of grizzled protestors blocking progress and seeking to pickle an illusory rustic past. In fact, as the contents of this newsletter eloquently witness, we are above all a positive, creative outfit, campaigning for things we believe will make people's lives better. When we have to oppose projects, we always offer an alternative, better way of doing whatever it is. It was the evidence that won the day in the South Downs but we held demos and organised petitions and so on too. It is the same with Barton Farm, Farnborough Airport, Tesco's megashed and the other campaigns you will read about in the following pages. There is a job to be done by the experts in planning committees and so on but there is also a vital role in mobilising public support, lobbying members of parliament, or just helping raise funds.

I hope that those reading this who are new to CPRE, or who have hitherto been too busy with other things, will think about giving us some of your precious time to help with any of the various activities on offer. We badly need new blood and, though by no means obsessed by age, we don't mind how young, or old, you are or whether you want to do one job or give a lifetime's commitment. The main thing is to get in touch and talk to us. We would love to hear from you.

Very many of you have been involved in some or all of these activities and this is my chance to thank you all most warmly for all you have done. It's now almost a year since I agreed to act as your chairman for ten minutes until someone else could be found (I am still waiting!). In that time, I have found that the greatest joy is the help, support and comradeship of the other volunteers. So, to the thanks of the organisation I would add my own, personal thanks, for much kindness and support.

John Venning,

Result! After 60 years, the South Downs has a National Park

I write this on the historic day when we heard that all we had campaigned for in the South Downs National Park in Hampshire had been achieved. Another great tract of the



Campaigners present oak trees to celebrate the announcement

county will now, like the New Forest, get the highest level of protection from development and extra resources to manage, conserve and protect the landscape. Hurrah! This was a spectacular success for the group of campaigners, led in Hampshire by CPRE, that put together the evidence that convinced the Inspector to change his mind and the Secretary of State to agree.

How the Western Weald was won....

In 1999, the government announced its intention to form a national park in the South Downs. When a significant part of the Western Weald in Hampshire was omitted from the Area of Search, we provided the evidence that led the Countryside Agency to reverse its decision and include the area around Petersfield and Liss and a number of other areas within Hampshire that CPRE Hampshire had worked on. The group then co-ordinated the production of evidence to the first Public Inquiry, providing support to Parish and Town Councils who wanted to be in the park.

Article continued on page 7

Branch News

I am delighted to write to you all in the first edition of our new 'Hampshire Views' magazine, which will be your main newsletter for the year, along with our shorter autumn bulletin. I hope you enjoy this new edition and find it a useful, appealing and informative read.

There has been a great deal going on at CPRE Hampshire over the last 12 months. As this goes to press, our Countryside and Design awards are being judged by our panel. The awards aim to recognise and reward people and organisations who are working to enhance Hampshire's environment and to highlight the importance of good environmental practice. We are pleased to have received entries from a number of different and exciting projects in the County – a great reflection of the environmental commitment in Hampshire. Winners will be announced in early summer and will be presented with a CPRE plaque.

Our 'walks and talks programme' has been a resounding success, with more people joining the events each year. We are particularly proud of this year's programme, which has lots of varied and unusual events – please see the back page for details.

As you are all aware fundraising is getting increasingly difficult in this financial climate. So, we have decided to develop a long term fundraising strategy to secure our future. We have been lucky enough to find an extremely enthusiastic and committed fundraising expert, who is passionate about both CPRE ideals, and the countryside.

Lucy Stirling works full time for the 'Friends of the Peak District and CPRE South Yorkshire as their fundraising manager and has now been employed by CPRE Hampshire on an external year contract to develop a three year programme of long term funding. She will work with us closely for a year to develop these funding activities. After this time, we will have a well established programme, which will enable us to do more to protect Hampshire and still balance the budget. Lucy tells you more about herself in the article below.

An annual newsletter cannot hope to tell you of all the things going on. However, I hope this will keep you informed of our current activities. With the help of our volunteer webmaster, David Skyrme, we put a lot of effort into keeping our website up to date as possible, so please log on to find out what's going on throughout the year.

Thank you for your time, and your continued support.

Best wishes
Becky French, CPRE Hampshire.

A 'Stirling' Way To Fundraise



Lucy Stirling

As someone who grew up in the green fields and rolling hills of Somerset and Dorset – where my parents still live – my feeling for the countryside has never really left me. My love of the countryside and the rural way of life is equal only to my love of AGAs, dogs, proper country pubs with roaring fires and good ales, and cooking, especially jams and chutneys. I am passionate about these and the WI as much as I passionately dislike some supermarkets!

I have been fundraising for nearly nine years – starting life doing fundraising and marketing for the Conservative Party and Rainbow Trust Children's Charity. After nine years of London (including university) my need to return to the countryside was great.

Following a holiday in the Peak District (trying to find Mr Darcy and Mr Rochester who are still eluding me!) I applied and became the full time fundraiser for CPRE Peak District and South Yorkshire where I have been ever since.

Fundraising for the countryside is so natural for me. This is why I am very much looking forward to putting together a plan for CPRE Hampshire and kick starting new fundraising to look after the beautiful Hampshire countryside and secure the branch's future.

It is our duty not to be complacent about the beauty we have around us and to work as hard as we can to make sure it is there for future generations to enjoy. This is why I will be doing my utmost to make fundraising a success – what more motivation does one need to make sure fundraising works, than the countryside where AGAs and pubs reign supreme and the dogs and I enjoy their warmth!

Features

- 1 2006 Vision
- 2 Chairman's Notes
- 3 Branch News
A 'Stirling' Way To Fundraise
- 4 Volunteering Made Easy (Erl)
- 5 A New Opportunity For
Volunteering...
- 6 Time For A Good Spring Clean!
- 7 South Downs Article
Mega Shed
- 8 Clearing The Clutter
- 9 'Verges' A Note From Our
Hampshire President
Whitehill, Bordon – An Eco Town?
- 10 Financial Report For The Year
Ended 31 December 2008
Leaving a Legacy to CPRE
Hampshire
- 11 Income/expenditure And
Balance Sheet For Year Ending
31 December 2008
- 12 Farnborough Airport Expansion
Save Barton Farm
- 13 Dark Skies – Light Pollution In
The South East
Green Landscape: Green Energy?
- 14 CPRE's Volunteering
Opportunities 2009
- 15 & 16 Calendar Reminder: CPRE
Hampshire's Walks and Talks
Programme 2009
Walks And Talks Booking Form

Volunteering Made Easy (er!)

New Ways Of Contributing To The Work Of The Branch

CPRE Hampshire has traditionally worked with committees at two levels: District (local) and Branch (County-wide). That has sometimes seemed to involve the duplication of work and rather more committee meetings than some of us want to sit in. Everyone leads busy lives, so we are trying to rearrange things to make the most of everyone's time and expertise, efficiently and economically.

One change has been to free the District Groups from the formalities of having their own committee-based structures, although these can continue if local members prefer. Members can decide just how they want to be involved, either locally or with the County Branch groups.

As part of this new structure we have formed two new interest groups, which will work alongside our existing branch groups. There are now 4 branch level groups at CPRE Hampshire, all of which offer a different interest and level of involvement. Here are the details of these groups:

Planning & Rural Group (PRG)

Good land-use planning is key to environmental protection and has always been one of CPRE Hampshire's top campaigning priorities. We have a well established planning group that deals with the wider planning concerns in Hampshire.



Christopher Napier, PRG Chairman

The Branch PRG aims to achieve wider recognition of issues relating to landuse and planning within Hampshire, and to improve understanding of CPRE's campaigns and policies on housing, countryside protection, the natural environment, waste and minerals.

The PRG also deal with rural issues, including farming and local foods, forestry, rural communities and the rural economy.

Current areas of priority in PRG include:

- The South East Plan (Regional Spatial Strategy), in particular, its domination by economic growth and housing targets when all who live in Hampshire know that our Region is reaching environmental limits
- Concerns about projected growth in the South Hampshire Sub-Region and the Western Corridor and Blackwater Valley Sub-Region in the north of the county.
- The impact on population and the economy of people living & working to a greater age.
- New Local Development Frameworks for every Local Authority area.
- Fighting for the best possible South Downs National Park and participating in the management of Areas of Outstanding Natural Beauty.
- Running a countryside and design awards scheme, and sponsoring an award for local food and drink producers.
- Participating in the work of Hampshire County Council in supporting rural communities

Local planning issues will still be addressed by a local planning team, working with their District Group or, for the wider issues, at Branch level.



If you have an interest in local planning and would be interested in linking up with other like-minded members locally or at branch level, you might like to know we intend to offer training in local planning – how it happens and how you can make a difference! For information please see page 14.

Transport Campaign Group (TCG):

The Transport Campaign Group campaigns for a sustainable transport system in Hampshire and seeks to maintain a pollution-free tranquil environment in the countryside and in villages. Its aim is to improve the understanding of national and local transport issues, of CPRE campaigns and policies and of its links in partnership with national and local authorities.



Don Stewart, TCG Chairman

CPRE wants to reduce the need for environmentally damaging transport on the road and in the air. It campaigns also for better use of existing seating capacity on public transport. We support a reduction in road building; oppose expansion of regional airports, airstrips and seaports and we want to see a more sensitive appearance and approach to road signage, light pollution, CO2 emissions and traffic management.

Current areas of priority in TCG include:

- South East Plan/ local Transport Plan
- M27 Improvements
- Operational expansion of Southampton and Farnborough Airports
- Air Corridors over Hampshire and New Forest
- Hindhead tunnel
- Lyndhurst By-pass
- Railway services in the South East
- Highway Rangers
- Noise and Light Pollution
- HGV Routes / SATNAV



New opportunities for transport campaigning centre on transport issues which will present themselves following HM Govt. decision to approve an ECO-town in Bordon/ Whitehill and possible reactivation of the rail link Bentley – Liphook.

For further information on how to get involved please contact:
Don Stewart, TCG Chairman, Tel: 023 9225 7506,
Email: don347@btinternet.com

A New Opportunity For Volunteering...

We now offer **two** new interest groups that will work across the whole County. They will offer more choice and flexibility in volunteering and we hope they will encourage more people to work with us in some of our activities.

The Campaign Management Group (CMG):

Through successful campaigning CPRE has been influencing policy and raising awareness about countryside issues ever since it was founded in 1926. The chance to make a real difference is what originally attracted me to join CPRE. I am therefore delighted to be involved with establishing the Campaign Management Group.



Caroline Ford, CMG Chairman

For an organisation like CPRE, campaigning can encompass everything from seeking a change in national legislation to responding to a local planning application. With a large number of campaigning groups seeking the ear of decision-makers, the campaigning arena can be fiercely competitive. To run a successful campaign we need to have clear objectives, be knowledgeable of the facts, well organised and media savvy.

CPRE enjoys enormous publicity at the national level and we need to make the most of this publicity as well as the support on offer from National Office in order to deliver successful campaigns at local level. The CMG will be responsible for managing campaigns that are not covered within the remit of the PRG or TCG. In particular it will:

- Assess the relevance of national CPRE campaigns to Hampshire and prioritise them.
- Identify local "hot spots" to bring a campaign to life at local level.
- Identify resources and skills required to implement a campaign.
- Identify the institutions and individuals who will decide the outcome of the campaign
- Develop a campaign plan.
- Seek volunteers to help deliver the campaign to a successful outcome.

It is expected that this group will be very 'ad-hoc' and most of the work will be done by sub-groups working on a particular campaign.



Campaigns for 2009 include:-

- Litter initiative, please see page 6 for more information.
- Light Pollution campaign, please see page 13 for more information

Please check out our volunteer page, for any forthcoming opportunities. Alternatively, if you would like to know more about how you can contribute to campaigning, please contact Branch Office on 01962 843655 or email cmg@cprehampshire.org.uk

Fundraising & Social Group (FSG):

Like any charity, fundraising and promotion are key to the success of CPRE Hampshire. We must promote the work of the charity, whilst also securing the funding to continue. These activities can be anything from running a raffle, to manning a stall at an event, to securing funding – all of these activities support the charity.

The group's main function is to support CPRE Hampshire activities in such aspects as fundraising, social events, membership etc. The tasks of this group will be extremely varied and will offer a lot of flexibility. It is not expected that every person will be involved in every activity. We hope to get a large number of volunteers, meaning that you can get involved in as much as you wish and when you are able to do so.



Volunteers Manning The Refreshment Stall At An Event

The FSG activities will include:

- Organise/ coordinate events (organise, help promote event, be involved on the day, bake a cake!)
- Support branch office with its annual 'Walks and Talks Programme' – (find local contacts/ places to visit, organise a visit, design an event, lead a walk)
- Grant applications (use database to select potential grant givers, write a simple application)
- Promotional events-(produce display presentations, man a stall, give a talk or a presentation)
- Newsletter – (write an article, take a picture, stuff envelopes)

Volunteering will be very much 'ad-hoc' and most of the work will be done by sub-groups working on a particular activity



Please check out our volunteer page for any forthcoming opportunities. If you would like to find out what volunteering opportunities there are in your area, please contact Branch Office at 01962 843655 email fsg@cprehampshire.org.uk



A Volunteer Leading A Walk In Old Portsmouth

Time For A Good Spring Clean!

In conjunction with our National ‘Stop the Drop’ Campaign, CPRE Hampshire has launched its litter and fly-tipping initiative for 2009. This work aims to provide information and coordination for Hampshire, as well as raising awareness and promoting community involvement in local litter issues.

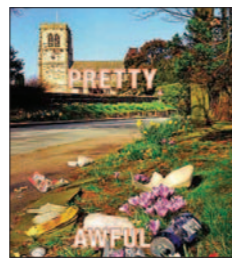
Litter Pack For Children:

CPRE recently teamed up with the Wiltshire Wildlife Trust to produce a new ‘How to Run a Whole School Litter Campaign’. The educational pack is designed for teachers and young children, and is a comprehensive guide on litter awareness for this age group. CPRE Hampshire is now working to promote the toolkit to all schools in the County and has joined forces with Liss Junior School to launch the pack through their citizenship week in May. The toolkit provides practical activities and lesson plans, links into the curriculum and encourages children to understand the problem of litter and the harm it can do to wildlife and the wider environment. We feel this toolkit is a vital part of our litter campaign in Hampshire, as it is at this early learning stage that we can encourage positive and sustainable habits that can last a life time.



Parish Pack:

Our National Office has recently launched a Parish litter toolkit which includes useful guidance, including such information as, using Parish Council powers to issue Fixed Penalty Notices, providing bins, and putting up signs to inform the public of litter laws and punishments. There are also tips on writing newsletters, banishing plastic bags, as well as some useful case studies from successful Parish Councils. If you would like a copy for your Parish Council, please contact Branch office. Alternatively, if you would like information or guidance on how to implement your own local litter initiative, please contact our campaign manager on cmg@cprehampshire.org.uk



Adopt An Area:

We have been working in the north of the County on ways to sustain a litter-free community. In Froxfield and Privett one idea has been to ‘adopt part of a lane’, where people volunteer for monitoring and cleaning a specific area on a regular basis. This Parish has 45 miles of lanes and within a few weeks of the scheme starting nearly 60 volunteers are taking part in the scheme. The initiative gives people a sense of achievement and they can be proud that their area is free of litter. It also encourages community cohesion, where the whole village is working together to enhance their Parish. To find out more information on how you can implement a similar scheme in your area, please contact Branch office.



Hampshire Spring Clean:

We are working with a number of local parishes in our ‘Spring Clean initiative’ which aims to raise awareness and increase the community involvement in local litter issues. Our campaign manager has been working hard to provide local groups with the relevant resources, local information and publicity to coordinate their campaigns. We have many litter groups involved in a Spring Clean up, primarily in Mid Hampshire. If you would like to contact or join a group in these areas, or you would like to organise a litter group in your local area please contact the Campaigns Group on csg@hampshire.org.uk.



Local Litter Pick:

Towpath Tidy 2009 – Make A Difference To Your Local Waterway. British Waterways (BW) is appealing to those who use the nation’s waterways, including boaters, walkers, cyclists and commuters, to get closer to nature by taking part in its annual Towpath Tidy. Supported by the Campaign to Protect Rural England, Encams, the Inland Waterways Association and a number of canal societies and trusts. More information is available from Doreen Hornsey, Secretary of the Surrey and Hampshire Canal Society, Phone: 01252 623591 e-mail: grador@totalise.co.uk



Return To Vendor!

‘Bring back the returnable bottle’

A public opinion poll commissioned by CPRE has found that 82% of people support a bottle return deposit system, whereby at least 5p was included in the price of every drink container, with that deposit paid back to the consumer when the container was returned for recycling. Such a scheme would surely decrease the amount of unwanted glass and plastic sent to recycling centres, but it could also reduce the amount of litter.

The research commissioned for Defra shows that a deposit scheme could have real advantages, and we don’t even need to look outside UK for proof. In Scotland, Iron Bru is still available in refundable glass bottles, and an impressive 70% of those are returned!

Bill Bryson, President of CPRE, said: ‘We asked Government to consider a review of bottle deposits systems earlier this year and we know Ministers will be looking at the results as part of their strategic review on packaging. This public poll proves that such a scheme would have huge support, so we say that now is the time for Government to take action’. For more information, please visit: <http://www.cpre.org.uk/news/view/558>



Winning the Western Weald (continued from page 2)

In 2007, the publication of the Inspector’s recommendation to exclude the Western Weald and a number of other areas, was a shock to all. The South Downs Campaign, with whom we worked, now had nearly 100 members, including Ramblers, Wildlife Trusts, Parish and Town Councils (this has since increased to 160 members). Working within their framework we mobilised Hampshire MPs, Hampshire County Council and East Hampshire DC and some 25 Parish and Town Councils in Hampshire and Sussex to come out in support of inclusion of the Western Weald. We used seminars, the media, demonstrations and promoted petitions that attracted some 14,000 signatures. With support from National Office and Bill Bryson himself and other celebrities, we got wide local and national publicity. All this achieved, first, a longer consultation period and second, agreement to consider new evidence on our concerns.

Submitting the evidence to the reopened inquiry involved co-ordinating the efforts and supervising the contributions of some 30 witnesses, some of whom were experts and some definitely not! Thus no shred of evidence that either supported our case, or refuted that on which the inspector had based his, was unheard. This was an immense amount of work: in total, the South Downs Campaign presented 80 documents to the re-opened inquiry, the majority of which related to the Western Weald, many of which were either led on, or coordinated by, CPRE Hampshire.



Hilary Benn with SDC Chairman Robin Crane and Margaret Paren, CPRE Hampshire announcing the decision.

While the inspector wrote his report and Defra digested it, the South Downs Campaign kept up the interest with their postcard campaign, which we supported, and which culminated with Bill Bryson presenting a giant postcard to Defra, representing the 16,000 that had been sent in by supporters.

We thought we had done what was needed but it was not until the day of the announcement itself that we knew that we had been heard and that the Minister, Hilary Benn, who had taken the trouble to come and see for himself, had decided in our favour. Phew!

A Mega-shed Near You

The Northern part of Test Valley has been divided by controversy over a planning application by developers, Goodmans, to build an enormous warehouse and distribution centre beside the A303 on what was the old Andover airfield, now restyled the Andover Business Park. At a junction on the strategic road network it was an obvious target for this type of development, a 24/7 operation with Tesco as the likely occupant. It is planned to be rather larger than Terminal 5 at Heathrow with huge implications for HGV movements at all hours of the day and night; a major impact on the countryside and issues of light and noise pollution.

Though the application has only emerged as one of wide public interest in the last 2 years, it was identified as an emerging problem over 4 years ago by CPRE Test Valley.

Andover has long benefited from a successful local economy with full employment though the jobs themselves have been heavily weighted towards relatively low paid and low skilled work. It has long been argued that because of this Andover’s young people have suffered from a poverty of aspiration with the town developing something of a downbeat image.

When the Borough initially proposed a Business Park for the airfield site, some of which was brownfield, CPRE did not object because we perceived that there could be benefits to the community at large from new businesses requiring higher skills, higher qualifications and arguably paying higher wages. However our initial support was undermined by the Borough proposing to double the size of the site and subsequently enlarging its scope to include B8 activities –many might have thought this an innocent change but opened it up to warehouse and distribution activities. We opposed both proposals in a submission to the Borough in December 2004 but the Councillors

appeared heedless of the potential. The bigger Business Park with the go ahead for B8 activities was now in the sights of bigger developers.

When Goodmans put forward their application early in 2007 it quickly polarised attitudes; a very well organised STOP campaign (Stop Tesco’s Oversized Plan) largely based in the villages most at risk countered later by a GO campaign from those in the area arguing for jobs of any sort. The STOP campaign was splendidly organised and while supporting their aims we did not have the resources to get heavily involved. John Moon and others played a key role in researching and promoting the CPRE view to Test Valley BC and, with STOP, we composed a joint letter of opposition for the local paper and made a contribution to their funding.

We had early success when the Borough’s Northern Planning Committee rejected the proposal by one vote. However, the Borough Planning Control Committee passed it overwhelmingly, on the votes of councillors without a local constituency. The planners were then suggesting that if taken to appeal, the developer would succeed and the Borough would be responsible for costs. In our view both highly doubtful claims.

Tesco now appear to have fallen out with the developers and in any event await the outcome of their appeal for a similar ‘Mega-shed’ on the Pyestock site in Farnborough.

We can only wait on developments. If there is a lesson for CPRE it is that we must always look critically at emerging planning ideas as they are developing – the early consultative stages of the Local Development Framework. We saw the issue emerging but it may be that we could have fought harder and longer at that early stage. A real opportunity for a new Business park to diversify and enhance Andover’s economy now looks likely to be lost.

John Cooper: *Chairman of Test Valley District Group*

Clearing The Clutter

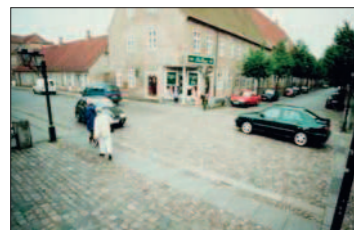
Four years on from a survey about countryside roads, Jeremy Wood, a CPRE Hampshire transport campaigner, tells us of the latest stage in bringing back quieter and safer roads, with reduced signage.

CPRE Hampshire first began to work on its clutter campaign in 2004, when it surveyed Parish Councils and amenity societies for their views on countryside roads as part of a national Clutter Challenge. 85% of respondents in the survey were found to want more appropriately designed street furniture, and use of low noise road surfaces in open countryside on major roads. In Autumn 2004, the results were collated and sent in to HCC as part of a policy review for the 2006-11 Local Transport Plan (LTP). Following a meeting, we were invited to become involved in the LTP Review. We also produced a document, after discussion with the County Council and Parish Councils, "Principles of Road Signage in Rural Areas", that has been used as a reference document at national level by CPRE.

In early 2006, CPRE Hampshire was invited to take part in the delivery of a 'clutter reduction' pilot project with HCC. The project had two main aims: to make the A32 safer and to reduce the impact of unnecessary signage on the landscape. The Council's professional consultants, Hamilton-Baillie Associates, advised on applying the 'Shared Space' concept in order to increase the safety of all road users.

The primary stage of the project was to clear visually intrusive and unneeded signage from the roadside, which CPRE calls 'road clutter'. It began with an audit of road clutter on the A32 between West Meon and Wickham. A steering group included the Council's environment department, local county councillors, Police and CPRE Hampshire.

Secondly the project aimed to change the aspect of the road so that drivers are made more aware of other road users, especially pedestrians – 'Shared Space'. This term is used to describe an approach to traffic engineering and road safety in Europe and, increasingly, in North America. At the heart of the concept is integration, rather than segregation, between different functions and different users of high street spaces. It was the status quo ante for most streets and public spaces before the introduction of segregation in the last century. Even today, in many parts of the UK, courtyards, market places and village squares involve the informal sharing of space for different uses and modes of movement, so from that perspective it is nothing new. (Ref: Ben Hamilton Baillie, August 2006).



Picture shows the concept of shared space-where there is an integration of traffic and pedestrians into one shared space

The project, which has unfortunately been severely delayed due to budgetary constraints, includes changing the colour of the road surface, removal of portions of white lining on the road, introducing features such as benches, seats and trees for instance and creating a very obvious village "gateway" which might include speed signs with the village name. So far the road surface colour of the A32 as it passes through West Meon has been changed by using a specially selected green aggregate. The main road, adjacent to junctions within the village, has been resurfaced in preparation for a new surface treatment that will give a buff colour.

The clear differentiation between the green surface and the buff is designed to add to the driver's awareness of travelling through a village where the unexpected might occur. This will be followed by other measures later. The changes to date are fairly subtle, but they are changes in the right direction and they will allow the Meon Valley road and the Hampshire countryside to be seen, with increased safety, at its best.

When the project within West Meon is completed the impact on safety will be assessed. Full Shared Space recommendations have not been applied due to cost. A compromise, which CPRE supports, should improve safety and protect the characteristics and sense of place of the Hampshire countryside. We hope it will become part of Hampshire's standard road improvement process.



West Meon before changes



West Meon after some changes – removal of white lines, chevron and some signs. Change in road surface colour from green to black. (The black will be buff coloured when the project is finished).

As new plans are progressed that relate to de-cluttering, the shared space concept, and other aspects of Hampshire's Local Transport Plan, HCC Environment Department has invited CPRE Hampshire members to comment, an approach that we value tremendously in our efforts to monitor and improve the tranquillity of the county's rural roads.

In September 2006, the RAC Foundation joined with CPRE nationally to form an alliance against the cluttering of the English countryside, urging Government to produce clear guidance on how to manage road furniture in rural areas. As a result, quite a few highways authorities have started to reduce signage in specific areas.

In Hampshire, the A32 pilot project is a good first step and we hope to see the concept rollout across the county as an integral part of the County Council's "People, Places and Hampshire Highways" initiative.

In 2007, the County Council carried out a project to increase safety and reduce clutter on the B3006 at Selborne. Not all residents are happy with the results. However, the County Council would be receptive to more clutter audits. If you would like to help us to reduce roadside 'clutter' in their area, we would welcome their help in carrying out a quick survey, that simply involves counting the kinds and number of signs on a particular stretch of road. We could then pass this information on to HCC for action.

'Verges' – A Note From Our Hampshire President

The verges of our country lanes and roads are often a beautiful sight in the Spring – full of a rich diversity of wild flowers. They also act as linear nature reserves for wildlife, providing corridors for plant and animal movement along their length. As they snake and twist through the countryside they pass over different soil types offering the widest range of habitats for wildlife. Their importance has been further increased by the recent phasing out of set aside and the continuing decline in the length of managed hedgerows. Most of Hampshire's verges, however, are mown by HCC contractors in the late spring and in the autumn, primarily for road safety reasons.

The autumn verges' cut in 2008 was exceptionally severe in north east Hampshire – down to bare earth in places – causing considerable local concern about the implications for all types of wildlife. I will shortly be meeting with the CEO of the Hampshire and IOW Wildlife Trust to explore the possibility of our two organisations working together



The Wild Flowers Found In Hampshire Verges.

with the aim of negotiating with the HCC to try to achieve a more sensitive balance between wildlife and road safety considerations in the maintenance of our verges.

Sir Brian Brown.

Whitehill, Bordon – An Eco-town?

I once knew a man who made his living buying and selling almost anything old, from bits of ships' timbers to masonry urns and dragons, to complete staircases. His operations, which were wide-ranging, were based somewhere in County Cork and the name of the enterprise was Haphazard Trading. What he loved doing most of all was recreating something wonderful out of discarded bits and pieces. When I knew him, he was restoring a traditional Irish fishing boat, a Galwey Hooker: bringing an abandoned vessel back to purposeful life. I thought that might be a metaphor for urban regeneration; whether it can apply to Whitehill Bordon remains to be seen.

Through much of the twentieth century Whitehill/Bordon has had to struggle with the haphazard ebb and flow of development, military necessities, motor traffic and the like. Now the Army, which has shaped the place for over 100 years, is moving out, leaving 250 hectares of land, much of it already built on. Local people and the local authorities, quite rightly, see this as an opportunity to put right the lack of facilities, jobs and other infrastructure from which the town has so long suffered. Long before anyone had heard of eco-towns, they embraced a 'Green Vision' for the future of their town.

At first sight, the government's eco-towns initiative seemed to offer an opportunity to make this vision a reality. The snag is that in order to qualify for eco-town status, there have to be at least 5,000 new houses, which is many more than was at first envisaged. A great deal will depend on what can be done to make sure the new development does not harm the surrounding countryside and villages, all of which are special and some very special indeed. That will take some doing and it is why CPRE Hampshire has given its support to the proposal only on condition that it can be done right. In particular, we are arguing that unless it can be shown that the 5,500 houses proposed will not harm the environment, the number of new houses should be reduced and consideration be given to replacing some of the existing stock of houses with more environmentally-friendly ones.

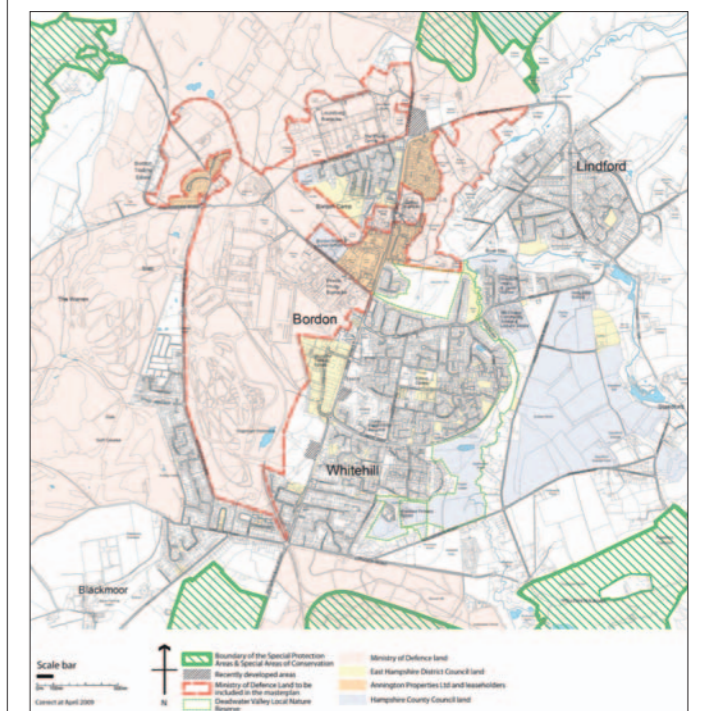
As we see it, the most difficult problem to overcome may be to design a transport infrastructure that will enable people to get to work or the shops, go to school, visit the doctor or to wherever they want to play, without using cars. Re-routing the road will help make the town more agreeable but something much more radical will be needed. We are strongly in favour of the suggestion of a tram-train link to both the London railway lines. It will also be necessary to make sure there are enough jobs reachable by bike or on foot and that they are available as the town begins to grow, so that newcomers will not need retraining into

greener habits, which rarely works! Innovation and ingenuity will be required in large doses if the town is truly to be carbon-neutral.

Then there is the surrounding countryside, which is glorious, gives the town a ravishing setting and is, like many places where the army has held sway over the years, full of rare, interesting and valuable species. Some of these, as you can see from the map, are of National and some of European importance. Rightly, they are protected by fierce legislation, which simply cannot be ignored. The designated South Downs National Park will come right up to the edge of the area. There will have to be close scrutiny of the plans through statutory Habitat and Environmental Impact assessments. Only if they give the right answer can the development go ahead.

The next stage is the publication of the draft master-plan, which is being worked on as we go to press. We shall study it with great care and interest.

John Venning, CPRE Chairman.



The areas of pink show MOD land. The surrounding green hatched areas show the Special Protection Areas and Areas of Conservation.

Financial Report For The Year Ended 31 December 2008

The final results of the Branch for 2008 show a surplus of £859, compared to a surplus of £1,559 in 2007. We were thus able to continue to achieve balanced results, while at the same time devoting two substantial legacies towards setting up a reserve for future campaigning.

Membership income remained much as in 2007, reflecting slightly higher subscriptions paid by slightly fewer members. However, as income from subscriptions is shared with CPRE's national office, and as admin and other costs continue to increase, it becomes increasingly necessary to look to other sources of funds.

Funds raised by the Hampshire Branch and its Districts were slightly less than in 2007, although there was a successful programme of Branch activities, the 500 Club made a valuable contribution, and there were a number of very successful events organised by enthusiastic volunteers in the Districts.

Our members and supporters were exceptionally generous in their donations direct to Hampshire Branch. We would particularly like to thank those who donated at the Memorial Service for the late Nigel Paren, and the RHS Spurgin and G.C. Gibson charitable trusts.

Total Branch expenditure was much as budgeted, which represents a continuing saving over years before 2006. This has been achieved by the efforts of our very small staff in continuing significant savings without compromising our efforts on campaigning and publicity. Work is in progress on reorganising the Branch by setting up Fundraising and Campaigning Groups in addition to the existing Planning & Rural Affairs and Transport Groups, so as to provide additional volunteer opportunities and streamline work in the Branch office.

The legacies received in 2008 have enabled us to set up a £10,000 campaign fund to meet costs arising from actions to be undertaken to preserve rural Hampshire. It is hoped to be able to augment this fund in future years, if our efforts to increase fundraising bear fruit.

Faced with static income and increasing costs, we have decided to employ a professional fundraiser with experience of work for another CPRE branch as a consultant during 2009. The objective would be at least to double the funds sourced other than from membership subscriptions by 2010. However the decision to make this investment has meant that it has not been possible to produce a balanced budget for 2009, and we will need to draw on reserves to cover it.

Our available funds at 1 January 2009 have increased to £71,902 as compared to £71,042 at 1 January 2008 and £69,483 in 2007. It remains the policy of the Trustees to maintain reserves equivalent to at least one year's expenditure, with the aim (in addition to providing a stable basis) of being able to fund exceptional expenditure which could be required for any exceptional campaigning need.

Full details of our income and expenditure, together with the associated budgets, are available for inspection by members at Branch Office.

Finally we wish to express our appreciation of the work done by Andy Perrins in undertaking the Independent Examination of the full set of Accounts, which are also available at Beaconsfield House for inspection by any member.

Tony Fessler, Hon. Treasurer

Will You Safeguard The Future Of Your Countryside By Leaving A Legacy To CPRE Hampshire?

Did you know that money left to CPRE Hampshire in your Will can be given completely free of tax, and that includes Inheritance Tax (IHT)? Moreover, if IHT could affect your estate, making bequests to charity may be a way of leaving nothing to the taxman.



Why not take professional advice to see whether this could apply to you?

One way might be to arrange your affairs so that the total value of bequests left to members of your family, friends and similar beneficiaries would be at or below your tax-free IHT threshold. Then arrange to leave anything that is left over, i.e. your residual estate, to charity.

Leaving a residuary legacy in this way is likely to be much more straightforward than by giving a lump sum (a pecuniary legacy). This is because a residuary legacy allows your friends and family to

be looked after first (tax-free) and only the residue (or the percentage of it stipulated in your Will) is given to charity, such as to CPRE Hampshire.

The value of this residual estate represents the sum that is normally liable to 40% Inheritance Tax. You can almost certainly avoid this by wording your Will carefully

to ensure that the whole of your residual estate is left to your favourite charities. Then everything left under the terms of your Will would be free of IHT, instead of leaving some of it to the tax man!

You are probably reading this because you support CPRE and we hope you will consider supporting us in your Will. If you would like to discuss the idea in confidence with one of our trustees or would like more information, please write to us at the Branch Office.

It is your choice, your Countryside, your Will.

CPRE – Hampshire – Income/expenditure Account And Balance Sheet For Year Ending 31 December 2008

Income And Expenditure

	2008 £	2007 £	2006 £	2005 £
Donors				
Membership Income	22569	20128	19484	18841
Branch Donations	241	443	349	2071
Gift Aid Refunds	2846	4473	3197	3530
Legacy Income	12000			
	37656	25044	23030	24442
Fundraising				
Nett Branch Contributions	13052	15269	11787	8075
Nett District Contributions	4588	5578	4440	4181
	17640	20847	16227	12256
Investment Income				
	3186	3075	1764	3611
Total Income	58482	48966	41021	40309
Branch Expenses				
Salaries and Staff	30906	27583	25601	27971
Office Administration	6647	6054	3431	6454
Examiner's fee	200	200	100	100
Depreciation	419	798	799	994
	38173	34635	29931	35519
External Costs				
Communication and Publicity	7981	7602	9916	11022
Campaigning	11469	5169	2448	4596
	19451	12771	12364	15618
Total Expenditure	57623	47406	42295	51137
Surplus / Deficit for the year	859	1559	-1274	-10828

Balance Sheets

	2008 £	2007 £	2006 £	2005 £
Unrestricted Funds				
Accumulated Fund at 1st January	71043	69483	70757	81585
Surplus / Deficit for the year	859	-1559	1274	10828
Accumulated Fund at 31st				
Represented by:-	71902	71042	69483	70757
Investments				
CAF Units at sell value		0	28720	28177
National Savings Income Bonds	11000	11000	11000	39720
			39720	11000
				39177
Bank and Cash Balances				
	62352	56159	23126	25456
Fixed Assets				
Office Equipment	530	467	1265	1426
Stocks				
	766	238	0	353
Debtors and Prepayments				
	9602	8870	8266	8176
Total Assets	84251	76734	72377	74588
Less Creditors				
Campaigning Reserve	10000			
Other Creditors	2349	5692	2894	3831
Total Nett Assets	71902	71042	69483	70757

Farnborough Airport Expansion; Who Cares About The Carbon Emissions?

Although the biennial Farnborough Air Show catches everyone's attention, the airport's bread and butter use is for business aviation. Now a draft 'Master Plan' proposes to nearly double its capacity from 28,000 aircraft movements to 50,000 per annum in 2010. That ceiling might not be reached until 2018, but then even 100,000 is a possibility next time round. Needless to say, CPRE Surrey and Hampshire Branches are very concerned about the implications.

Consultation proposals have been published by both the airport owner, TAG Aviation, and the local council (Rushmoor B.C.) in anticipation of a planning application later this year. TAG doubtless wants to increase profitability through more flights and higher landing fees for heavier aircraft, while the council hopes to increase business opportunities for the whole airport area.

CPRE Hampshire and Surrey Branches were incensed to find that Rushmoor Council had suggested that to reduce the airport's carbon emissions would be immaterial because, under the EU's Emissions Trading Scheme, someone else would take up the shortfall! This runs totally counter to the Supplement to PPS1 which requires the council to tackle the implications of climate change as a planning priority.

Being cocooned in a private aircraft with a controlled fossil-fuel bonfire on either wing might seem hard to justify outside company boardrooms, but it is an uncomfortable fact that society seems unable to encourage social responsibility except through legislation and by price. The one has to be at the centre of the debate when a planning application comes forward, but what about the other? With everyone

Save Barton Farm – A Local Campaigning Story

Over 700 people took to the High Street of Winchester on Saturday 14th March, to show their continuing support for the 'Save Barton Farm Campaign', which opposes the Council's proposals to build 2000 new homes on a 300 acre working farm site to the north of Winchester.

Winchester's landscape setting is an integral part of this historic City. Campaigners believe that proposals ignore the importance of this greenfield site as part of its special character. For campaigners this urban extension would not only destroy Winchester's landscape setting, but would create enormous traffic problems and flood risks for the City

The march was attended by residents from all around the City, of all ages and from all political parties, united in their support to save Barton Farm. Gavin Blackman, the group's Chairman said, 'I was very encouraged by the turnout and also the engagement of the people who joined the March. All I hope is that given this strength of feeling and the support we have across the political spectrum together with the numerous factors as to why nominating Barton Farm for development is grossly premature, Winchester City Council will omit Barton Farm as a preferred option site.'

The Save Barton Farm Group is the largest community group in Winchester and has many CPRE members within its supporters.

faced by the economic downturn, is the council right to maintain that 'the customers that Farnborough serves are unlikely to be very price sensitive...?'

While some business flights might be efficient in corporate terms, according to 'European Business Air News' the average load factor for private jet travel is 2.3 persons per journey. While we don't know the actual Farnborough load-factors, we do know that the purchase of carbon-offsets is one way of assessing a voluntary charge in relation to the carbon-footprint per aircraft, per journey. Although this is a fairly disingenuous mechanism it is about the only one we've got, and parliament has signed up to such a scheme for all central government and ministerial air travel.

CPRE is intent on having TAG and the council recognise the true cost of business aviation and, at the very least apply the same standards across the board as for government travel. No doubt TAG has the means to do this – and its Master Plan does touch on an emissions charging scheme – but does it, or the planning authority, really have the will to make such a levy compulsory?

At least the community might then feel that an attempt is being made to recognise the real cost to society of the carbon emissions for which business aviation is directly responsible; and perhaps 28,000 aircraft movements per annum would prove to be enough to satisfy demand after all. Contributed by – Hugh Sheppard, Chairman North East Hampshire DG



Demonstrators Marching On The High Street Of Winchester

Chris Slattery, CPRE members said, 'for 10 years CPRE has worked tirelessly and successfully to protect the reserve greenfield sites from unnecessary development. Barton Farm is one such site with reserve status. 3 Government Inspectors and the High Court have rejected applications for its development. CPRE works to protect the beauty and tranquillity of the countryside. We believe high quality farmland should be protected and the landscape setting of Winchester should not be blighted by this massive unnecessary development of the reserve site of Barton Farm'.

The group will now continue their campaign pressure, to make sure the correct decision is made for both the residents and the landscape of Winchester.

For more information, please visit: www.savebartonfarm.co.uk. They have also created a No 10 petition to support their campaign; this can be accessed through their website.

Dark Skies



Did you know that 2009 is designated the International Year of Astronomy?

If you want to join a focus group to put together a programme of events during April – December 2009 to draw attention to the Dark Skies campaign – contact the Campaign Management Group on cmg@cprehampshire.org.uk. Darkness at night is one of the things that defines the countryside and makes it so different from towns and cities. But that darkness has been disappearing, and with it our view of the stars and planets. The reason is that we carelessly and wastefully beam outdoor light upwards. Collectively, these lights stop us from being able to see the night sky.

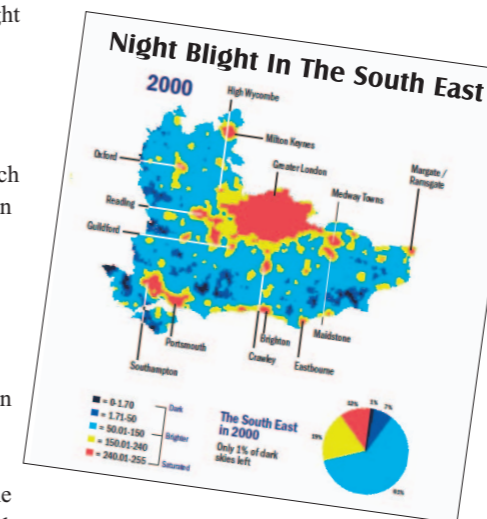
Our Night Blight campaign used satellite data, which found that between 1993-2000 light pollution had increased by 24% nationally and the amount of truly dark sky had fallen by 4%. More recently CPRE teamed up with the Campaign for Dark Skies and asked people to count the number of stars they could see within the constellation of Orion. The majority of people could see less than 5 stars in the constellation (there are thought to be around 50).

Light pollution not only destroys our view of the night sky, it wastes energy and so adds to greenhouse gases. It can harm people's quality of life and even birds, encouraging them to sing all night.

After much campaigning by CPRE and our supporters the Government has now made light pollution a Statutory Nuisance. For more information on this important new law, please visit: www.cpre.org.uk/campaigns/lightpollution.

In 2009 the world celebrates the International Year of Astronomy to commemorate the 400th anniversary of Galileo's use of a telescope to study the night sky. There are events happening across the county where you can discover more about the wonder and beauty of the night sky. Events such as these provide an ideal opportunity for CPRE Hampshire to reinvigorate the Dark Skies campaign to keep our starry nights and to raise the awareness of light pollution.

We are looking for volunteers to form a focus group to put together a programme of activities to raise awareness of light pollution from March – December 2009. Please contact the campaigns group if you are interested in being involved with this campaign



Green Landscape: Green Energy?

During the Public Inquiry into the proposed Wind Turbine at Glyndebourne, David Attenborough, no less, argued that if we don't get on and generate our electricity from non-fossil fuel sources, there won't be any landscape left to protect. It's a point that needs answering. CPRE, who opposed the turbine, would answer it like this. By the time we discover the truth about global warming, it will be too late. So we certainly need green energy and we think the countryside can contribute its share but that doesn't mean we simply have to accept massive intrusions into our most precious landscapes in the form of wind farms or great prairies of biofuel crops. These technologies may have a role to play in the mix, or there may be better solutions like tidal power or biomass from forestry. That is for the scientists and engineers to judge. What we need is a rational way of working out where in the landscape the equipment can best be fitted in.

The approach to landscape character assessment is evolving all the time. The cultural heritage, or time depth of the landscape and its ecological value form an important part of the evaluation. This is called an integrated landscape character assessment. In the past this work has been top down and undertaken by experts in the field. Best practice now requires that the views of the local communities about the landscape should form part of the evaluation.

That is where CPRE comes in. There is now the opportunity for local communities to contribute to the process, providing a bottom up perspective to inform the bottom down one described above. The Parish, or Community Landscape appraisal is an exercise in which local people get involved in looking at their landscape and working out what matters to them in it and which of its features contribute most to their affection for it. CPRE has produced a tool-kit (Unlocking the Landscape) that has so far, in Hampshire, been piloted at Chilbolton and successfully completed in Liss and Buriton.

Now we come to the really important bit. The document that emerges from this community exercise then feeds directly into the Village Design Statement, which is ultimately adopted as part of the Local Development Framework (Local Plan in old money). What it does is carve out the evidence that can form the basis of decisions about such as...you've guessed it: whether to put a wind-farm on top of a beautiful bit of downland, for example. It ought to be much easier to oppose such developments successfully if one has this sort of evidence at the outset, rather than trying to assemble it in response to a particular application.

The Branch is working with the HCC experts to try to encourage and support communities that want to carry out these assessments. They can be done by an individual parish or by a group of neighbouring parishes. They involve a short but intensive spell of work by a small group of volunteers and they cost a bit of money, chiefly for printing the document. But they are worth the energy that goes into them. They may even save more energy than they consume. Now what could be greener than that?

If you want to know more about Landscape Character Assessments, practicalities, possible funding sources etc, please contact Branch Office. Alternatively, visit www.cpre.org.uk/library/results/landscape

Margaret Paren

CPRE's Volunteering Opportunities 2009

Volunteering is key to the success of CPRE Hampshire. It is through our dedicated and talented active members that we are able to continue the vital work of conserving and promoting our wonderful Hampshire countryside.

We hope to make our volunteering opportunities clearer and more accessible to people wishing to help. Our new opportunities will be posted in the newsletters and will be sent to all those that express an interest. Eventually, we hope to include a volunteer page on our website, where people will be able to view all available roles and we hope this will encourage more people to become involved with our activities.

Planning Monitors:

GET INVOLVED

Are you interested in becoming involved in planning, but don't know where to begin? Well this is your chance

Opportunity: We are looking for individuals that have an interest in local planning to help deal with issues in specific areas of the District.

Training: we are offering planning training for all those wishing to become involved. This will offer guidance and support on the local planning system and to teach people about the CPRE policies and procedures that informs planning decisions.

Benefits: Volunteers will be supported by their local Districts and by branch office – providing support and information to new volunteers.

Assistant Press Officer:

Do you want to hone your reporting skills? Are you keen to make more use of your camera?

Opportunity: to report on various CPRE events and initiatives. Tasks: to visit events, interview the participants and write a short illustrated report.

Training: a 2 hour training session is offered covering reporting procedures and advice on the types of photographs required.

Dates: depending on your commitments and the campaign/ events schedule

Benefits: this is an ideal opportunity to gain PR experience as well exercise your skills; travel expenses can also be claimed.

Hampshire Show Team:

We need a team of "Show Stoppers"

Opportunity: to help the group attend County shows with displays and information and provide a link between CPRE and the public

Tasks: help design show presentation, transport equipment, 'man' the CPRE stall and provide information to the public

Training: we will provide briefings on our aims and objectives, information on our campaigns and local issues for all those new volunteers

Benefits: opportunity to attend County shows, discounted tickets available for some shows. * Please see Alresford Show advert if you are interested.

Year Of Astronomy:

Are you interested in issues of light pollution and want to get involved in local campaigning?

Opportunity: to join a local campaigning group to implement and promote CPRE light initiative in conjunction with the year of astronomy

Training: CPRE training available, also the campaign manager will provide any relevant information on the campaign

Benefits: be involved in local campaigning and meet like-minded people. Contact: cmg@cprehampshire.org.uk

Saturday 25th

The Spring Clean Campaign: as part of our Spring Clean initiative we are organising a clean up of the Parish of Shedfield. If you are interested in helping with these activities and to meet with like minded individuals, please join us on the day. Not only does the group intend to clean up the area, it aims to have fun in the process! Please contact Caroline Ford on: ceford@tcp.co.uk

Saturday 25th

Spring Clean Day: we are looking to kick start our assistant press officer role by reporting on our first 'Spring Clean day'. We are looking for someone to visit on the day, interview the participants and take relevant pictures. Also, if you would like to write a report on the day, we could use this to inform the local media of the event.

May 20th

AGM – at our annual AGM we are looking for volunteers to help set up and clear away the event. We are also holding a raffle and are looking for enthusiastic raffle ticket sellers to help fundraise for the charity.

May 24th

CPRE car boot sale. Worthy Road car park Winchester 8am to 2pm. We need 4 stewards to arrive around 7.30-8 am to help coordinate the stall holders and public. We are also looking for people to give out CPRE information. *If anyone has any bric-brac, or unwanted goods, that they would be kind enough to donate, please contact Chris on 01962 865088 or John on 023 92343731 to arrange collection.*

September 5th

The Alresford Show. This is effectively a County wide show and CPRE needs to present an organised and effective face. Nick and Caroline Perry have organised this brilliantly for the last 10 years and we now need a successor.

Tasks: we need about 8 people to man the CPRE stand for about 1.5 hours each between 9 am and 6pm.

Training: Nick will train any volunteers up to 1st September.

Benefits: We can arrange a reduced price ticket to the show for you. The pitch also has a fantastic view of the cricket stand, for all those cricket fans

Oct 3rd

Galliard Trio: We need people to help with door ushers, ticket sellers, refreshments and car park stewards on the night of the event.

As well as these opportunities, we have the two new interest groups (please see page 4 & 5), which will be working throughout the year on activities. If you would like more information, or would like to become involved please contact branch office.

If you are interested in any of the above opportunities please contact Becky French on: info@cprehampshire.org.uk, or call 01962 843655. We look forward to hearing from you.

Calendar Reminder: CPRE Hampshire's Walks And Talks Programme 2009



A Guided Heritage Trail Around Romsey On Tuesday 28th April at 10.30 am

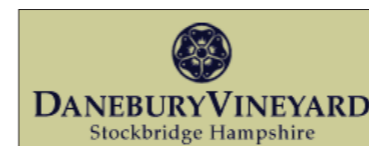
Guided by an expert from the Romsey Tourist Information Centre, the tour will look around the picturesque market town, giving an insight into Romsey's surprising historic past. Enjoy Romsey's past and present, its royal patronage, celebrated personalities and historic buildings and the importance of the River Test in establishing it as an important industrial town. The tour will take approx 1.5 hours. £4.50 for members and £6.50 for non-members.

The 2009 AGM at Shawford Village Hall, Near Winchester, Wednesday 20th May

This year's AGM will be held at Shawford Village Hall, Nr Winchester. The doors will be open at 10.00am for tea and coffee. The AGM starts at 10.45am and will be followed with an optional buffet and the chance for socialising. For this year's talk we have Shaun Spiers Chief Executive of National CPRE, who will talk about CPRE's new 2026 vision. There will be a chance for further discussion and a question and answer session at the end. The AGM has been arranged to accommodate public transport services so this means that members can arrive by either train or bus in plenty of time for the AGM. We hope this change of venue will offer all members the opportunity of joining us for the day – we look forward to seeing you there. **Please note: advance booking is advisable and essential if you wish to book a buffet meal. The application form is included in your spring newsletter.**



A Guided Tour, Wine Tasting And Lunch At Danebury Vineyard, Stockbridge – Wednesday 8th July at 10.00 am



The Vineyard has been operating very successfully for some 15 years producing award winning sparkling and dry white wine. It is in a stunning location and is superbly presented and managed. The tour will look at the workings of the vineyard, as well as explaining the challenges of wines in an English climate. The visit will include: a tour of the vineyard with the estate manager, wine tasting of sparkling wines, BBQ – a two course meal with wine, and the opportunity to purchase discounted wine. **£25 for members and £27 for non members.**

A Guided Walk On The South Downs Saturday 18th July at 10.30 am

Guided by two CPRE members and key South Down campaigners, the walk will look at landscape within the Western Weald – please see page 7. The Walk will take place in a highly rural and tranquil area of the Western Weald, and show great variety of landscape. It will go through marshland (on a good path), along historic tracks past ancient buildings and hammer ponds, over open farmland, and across restored heathland, to a viewpoint with magnificent views over the Milland Valley to the South Downs. The village hall and grounds can be used for picnic lunches, or you can drive to a local pub for lunch. **£4 for members and £6 for non-members.**



Bill Bryson Standing On The South Downs 2008

Walks And Talks Booking Form 2009

I / we would like to attend the following visits...

<input type="checkbox"/>	Guided Heritage Trail	<input type="text"/>	Place(s)
<input type="checkbox"/>	Daisy's Dairy	<input type="text"/>	Place(s)
<input type="checkbox"/>	Danebury Vineyard	<input type="text"/>	Place(s)
<input type="checkbox"/>	South Downs	<input type="text"/>	Place(s)

To book your visits, please fill in this form and send it to branch office.

<input type="checkbox"/>	Farlington Marshes	<input type="text"/>	Place(s)
<input type="checkbox"/>	National Oceanography Centre	<input type="text"/>	Place(s)
<input type="checkbox"/>	Concert By Galliard Trio	<input type="text"/>	Place(s)

I enclose a cheque, made payable to CPRE Hampshire for £

A Private Visit To Houghton Lodge – Wednesday 5th August all-day

CPRE Hampshire has organised a private visit for our members and their friends. These beautiful gardens are set by the River Test, with far reaching and untouched views across the valley and water meadows. Key features of this garden include: original trees and under planting typical of an 18th Century garden, delightful herbaceous borders, Woodland Walk to a Grotto, a fully restored chalk cob walled garden, a Hydroponic greenhouse, an orchid House, walks by the River Test and two new Alpacas! Further details will be available nearer the time. We expect to offer refreshments on the day. We hope to offer a guided tour of the historic house, as well as a private opening of the gardens. Please look out for further information, as places will be limited.



A Guided Tour Of Farlington Marshes on Friday 21st August at 1.00pm



CA guided tour of Farlington Marshes on Friday 21st August at 1pm
Guided by Jamie Marsh, the Reserves Officer from the Hampshire and Isle of Wight Wildlife Trust, the tour will look at the abundance of birds and wildlife and explain the role of the charity at the site. The marsh is one of the last pieces of open common habitat left around Langstone Harbour and is an internationally important site for bird populations. This is the best time to visit the site for wildlife, and will be a blaze of colour in summer with many flowers and butterflies. £4 for members and £6 for non-members. (picture by Peter Emery, Hampshire and Isle of Wight Wildlife Trust)

A Day At The National Oceanography Centre In Southampton On Wednesday 30th September From 10.00am Till 4.30pm



Southampton is the country's leading oceanography centre. It has unparalleled investment in marine, earth sciences and technology in the UK. Guided by experts at the centre, we have organised 2 tours of the facilities, where we will be looking at their latest technology and finding out more about their important research. Part of the visit will include going out on the Solent in the centre's research vessel 'RV Callista'. This part of the trip will offer participants 'hands on' science and the chance to learn first-hand about the marine life of the South coast.

A Musical Performance By The Galliard Trio At The Hospital Of St Cross On Saturday 3rd October

We have organised a musical concert in the beautiful setting of the Hospital of St Cross, in Winchester. The musicians of the Galliard Trio have been performing music for various events since 1990. The group's repertoire consists of classical, popular and religious selections. The members are professionals who are current members or recent performers in the Virginia Symphony Orchestra. Tickets are £7.50 and can be purchased from John Budden on: 02392 343731



For more information, please visit www.cprehampshire.org.uk or telephone Becky French on 01962 843655

Please fill in the form on the back and send, along with payment to:
CPRE Hampshire, Beaconsfield House, Andover Road, Winchester, Hampshire, SO22 6AT

GET INVOLVED

Walks And Talks Helpers:

do you know an interesting or unusual Hampshire walks? Do you know a walk that is not usually open to the public?
Or Would you like to guide a walk?

We are looking for volunteers to help us with our annual walks and talks calendar. Often the best walks are known by the local people, who have unparalleled historical and local knowledge of their area. Please let us know of any walks that you feel CPRE members would be interested in. We would love to have local advice and help with our walks for our 2010 calendar.